

PVC Kids Bow Cheat Sheet

(Draw Wt ≈ 20lb@24")

- Cut 3/4" Schedule 40 PVC pipe to 58"
- Mark handle 4" on center (29")
- Flatten limbs
- Form end taper 10" deep, 1/4" end width
- Apply 1" epoxy putty in tips
- Cut nocks 3/4" from tips @ 45° angle
- Form grip / straighten limbs
- Make String:
 - 12 Strands B-50 / 0.018" nylon serving
 - 55" long
 - 3" upper loop
 - 2 1/2" lower loop
- Affix string to bow, verify straighten limbs
- Prime bow with PVC purple primer
- Paint bow
- Make arrow rest
- String bow and pick upper limb, then affix arrow rest accordingly
- Wrap Handle with twine or other appropriate material.

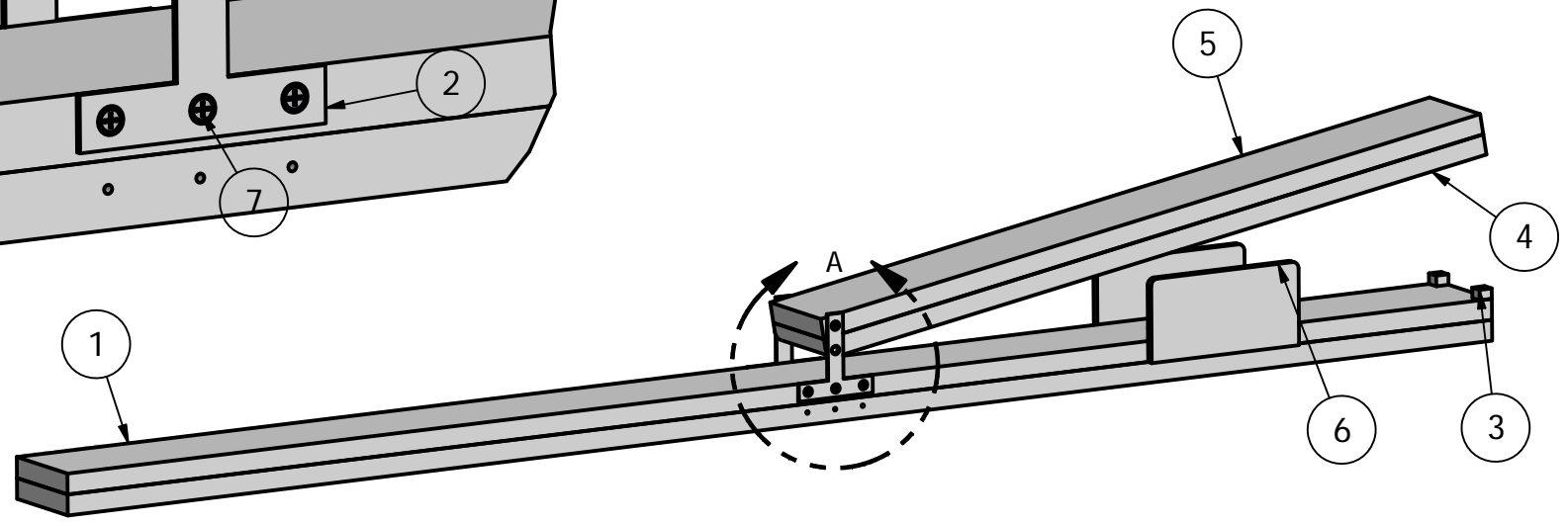
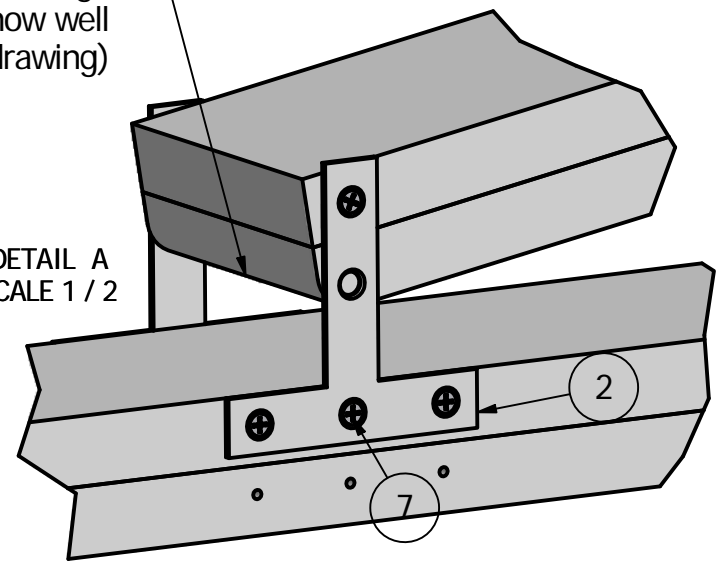
PVC Quiver Cheat Sheet

- Cut 4" Thin Wall PVC Drain Pipe to 20"
- Heat oven to 210° put tube in oven for 8 minutes or so, till tube slumps
- Pull from oven, flatten back
- Heat end of pipe and form bottom seam with clamp
- Trim / Sand / Drill bottom seam for saddle stitch
- Cut length of quiver to 18"
- Cut 1" strap slots 2" & 2 3/4" from top, and 3" from bottom (on center) on back.
- Prime quiver with PVC purple primer and paint
- Wrap lip of quiver with gorilla tape, apply twine wrap.
- Saddle stitch bottom seam
- Cut strap to 3 feet. Fold-over bottom of strap 4 times and stitch
- Feed strap through bottom slot (from inside), over top of quiver to top slot (from inside), and back into middle slot

Parts List			
ITEM	QTY	PART NUMBER	DESCRIPTION
1	2	Base	58" X 3 1/2" X 3/4"
2	2	T Bracket	3" T-Bracket
3	2	Taper Stop	1/2" X 1/2" X 3/8 thick
4	1	Taper Arm Bottom	27 1/4" X 3 1/2" X 3/4"
5	1	Taper Arm Top	27 1/4" X 3 1/2" X 3/4"
6	2	Taper Guide	6" X 3" X 1/4" Thick
7	8	Flat Head Wood Screw	Whatever screws fit bracket

Radius this edge
(Doesn't show well
in drawing)

DETAIL A
SCALE 1 / 2



Notes:

1. Glue / Screw Base boards and Taper Arm Boards Together.
2. Glue / Screw Taper Guides approximately 8 inches from end of Base
3. Glue Taper stops to end of base.
4. Secure T-Bracket approximately level with surface of Base.
5. To set height of Taper arm, place 7/8" wood block between T-brackets and set Taper Arm on it. Then secure taper arm to T-bracket with screw. This produces a taper of 7/8" at the handle to 3/8" at the limb tip.
6. All dimensions in inches.

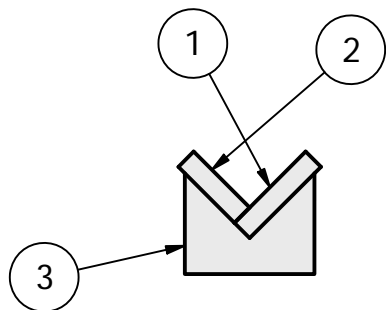
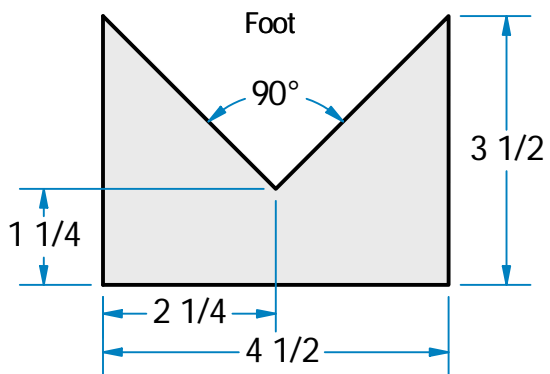


Product Taper Jig		Date 8/19/2018
Size A	Page 1 of 1	Drawn By Stephen Graf

2

1

Parts List			
ITEM	QTY	PART NUMBER	DESCRIPTION
1	1	Side 1	36" X 3 1/2" X 3/4"
2	1	Side 2	36" X 2 3/4" X 3/4"
3	2	Foot	See drawing for dimensions



Notes:

1. Glue / Screw Side 1 and Side 2 together.
2. Glue / Screw feet to bottom of trough formed by side 1 and 2.
3. All dimensions in inches.



Chestnut Hill Farm

Product
Heating Trough

Date
8/20/2018

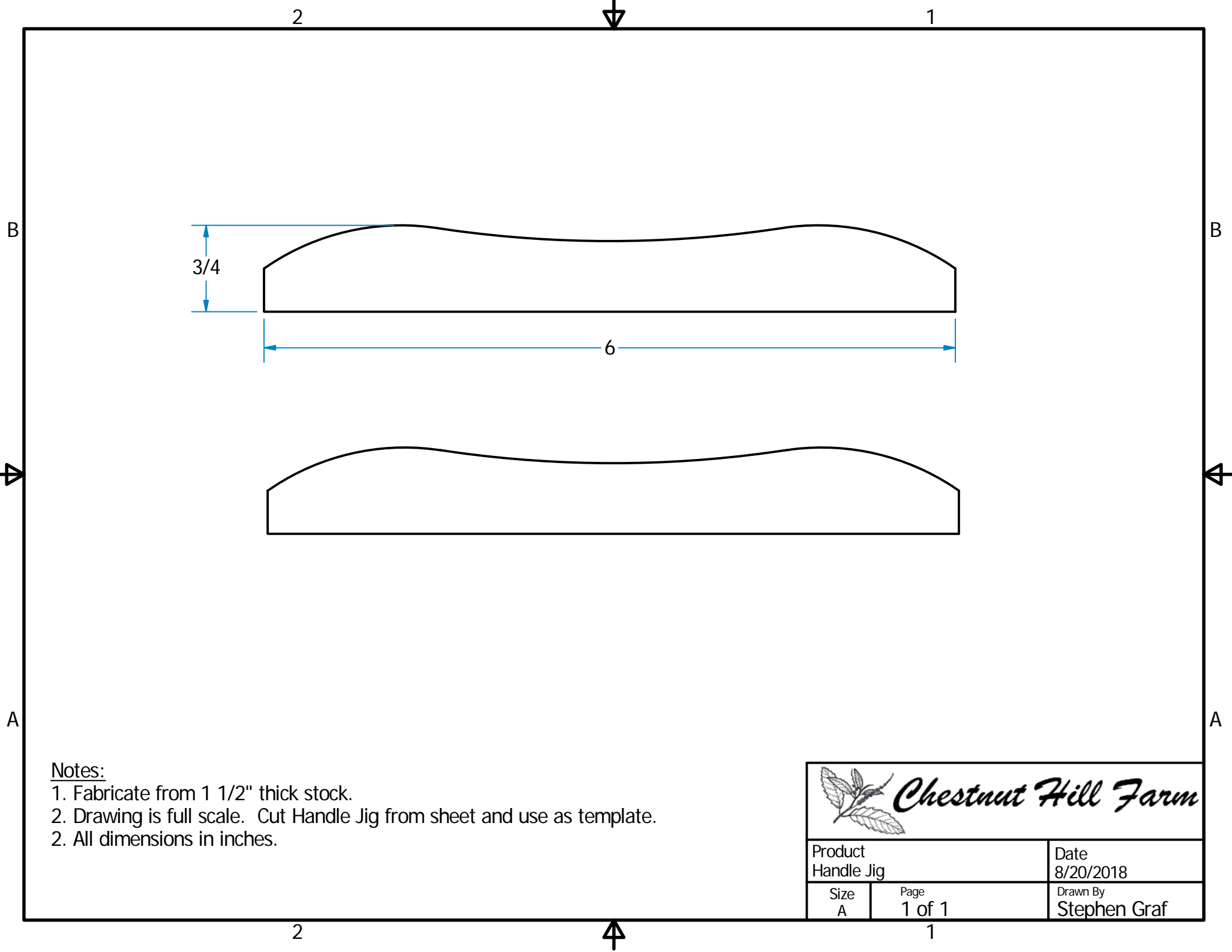
Size
A

Page
1 of 1

Drawn By
Stephen Graf


2

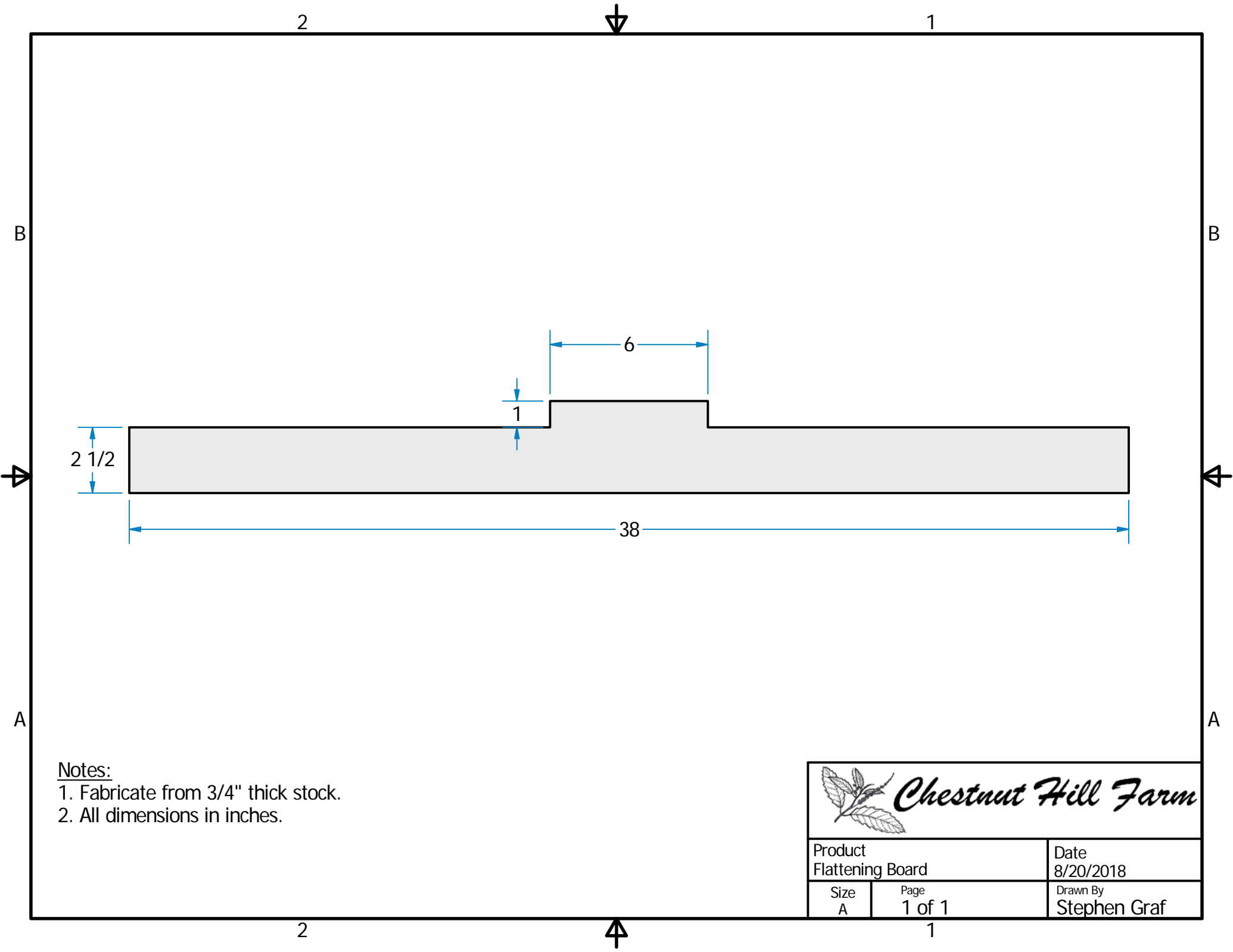
1



Notes:

1. Fabricate from 1 1/2" thick stock.
2. Drawing is full scale. Cut Handle Jig from sheet and use as template.
2. All dimensions in inches.

 Chestnut Hill Farm		Date
		8/20/2018
Product	Page	Drawn By
Handle Jig	1 of 1	Stephen Graf



2



1

B

B

2 1/2

1

6

38

A

A

Notes:

- 1. Fabricate from 3/4" thick stock.
- 2. All dimensions in inches.



Chestnut Hill Farm

Product
Flattening Board

Date
8/20/2018

Size
A

Page
1 of 1

Drawn By
Stephen Graf

2



1